



[FIND A DEALER](#)



SAFETY RECALL NOTICE

Dear Valued Customer,

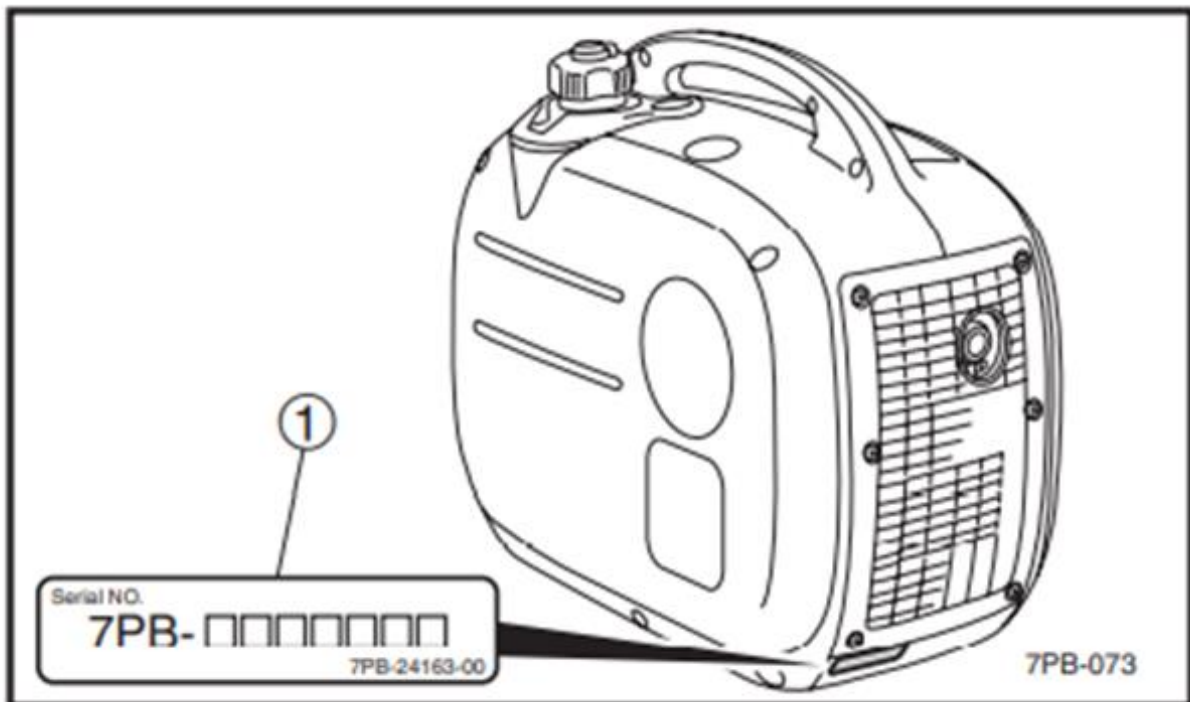
This notice is sent to you in accordance with the requirements of the Consumer Product Safety Act. Yamaha Motor Corporation, U.S.A. decided that a defect that relates to safety exists in certain 2018 and 2019-model EF2000iS portable generators and announced a Factory Modification Campaign (Recall) on November 22, 2019, to repair affected generators.

We have just recently learned that the EF2000iS generator you purchased was not warranty registered with the Yamaha warranty system, which would have given us your name and address. As a result, we were unable to send you notification when the recall was originally announced. Sales records do indicate that you purchased your EF2000iS during the time when affected generators were being sold, but we do not have your

serial number to confirm if yours is an affected one.

We want to determine if your generator is affected and, if so, send you important recall information so you can have necessary repairs made at no cost. To do so, we need your EF2000iS Serial Number.

The Serial Number can be located on the lower left corner of the exhaust side of the generator as shown below.



There is a three-digit prefix (7PB) and then a seven-digit production number.

Please either [click here to submit a claim](#) or call Yamaha at [866-788-7398](tel:866-788-7398) ext. #4 with your full Serial Number.



Once we have investigated your serial number, we will promptly let you know if your EF2000iS is affected and will provide further instructions if it is.

If it is more convenient for you, you may take the generator to the nearest authorized Yamaha Generator Dealer who can inspect your generator and repair it for you if it is affected. They can properly register your purchase with Yamaha at the same time. Call Yamaha at [866-788-7398](tel:866-788-7398) ext. #4 for the name of a dealer near you.

We're sorry to cause you any inconvenience, but we are sincerely concerned about your safety and continued satisfaction with our products. Thank you for giving your attention to this important matter.

This email contains many of the valuable trademarks and service marks owned and used by Yamaha throughout the world. The email may also contain references to other company, brand, and product names that may be trademarks or service marks of their respective owners. Unless noted otherwise, these company, brand, and product names are used herein for identification purposes only, and reference to any names, marks, products, or service of third parties do not constitute or imply endorsement, sponsorship, or recommendation of the third party or the products or services.

This email was sent by Yamaha Motor Corporation, U.S.A. to {{lead.Email Address}}. Please do not reply to this email. To contact us, please call us at 1-800-962-7926 or visit our [contact us page](#).

©2021 Yamaha Motor Corporation, U.S.A. All rights reserved.
3065 Chastain Meadows Pkwy NW #100, Marietta GA, 30066 U.S.A.
| www.YamahaMotorsports.com

[Click here to view this email as a webpage](#)